

yellowline

by IKA®

2004

2005



yellowline
by IKA®

MSC basic C

New magnetic stirrer with heating

- ☒ Large heating plate made of glass-ceramic
- ☒ Excellent resistance to chemicals
- ☒ Max. heating plate temperature: 450 °C
- ☒ Special connector for temperature controller TC 2 according to DIN 12878

Stirring quantity (H ₂ O):	15 l
Motor rating input / output:	8 / 2 W
Speed range:	150 - 1.200 rpm
Heating output:	500 W
Temperature range:	RT - 450 °C
Heating plate material:	glass-ceramic
Heating plate surface (L x W):	140 x 140 mm
Max. load:	15 kg
Dimensions (W x D x H):	184 x 276 x 98 mm
Weight:	2,9 kg
Protection class acc. to DIN EN 60529:	IP 22

Package* Id-Nr. 9009300

* MSC basic C, TC 2, H 16 V,
H 36, H 44



MSC basic C Id-Nr. L005245

TC 2

New electronic temperature controller

Electronic temperature controller TC 2

Special electronic temperature controller with digital display for magnetic stirrer MSC basic C.

Sensor:	PT 1000
Measuring / control range:	0 - 350 °C
Resolution:	0,1 K (< 100 °C) 1,0 K (> 100 °C)
Measuring accuracy:	± 1 K
Control deviation:	± 3 K
Protection class acc. to DIN EN 60529:	IP 44

Accessories:

1.1

Support rod H 16 V

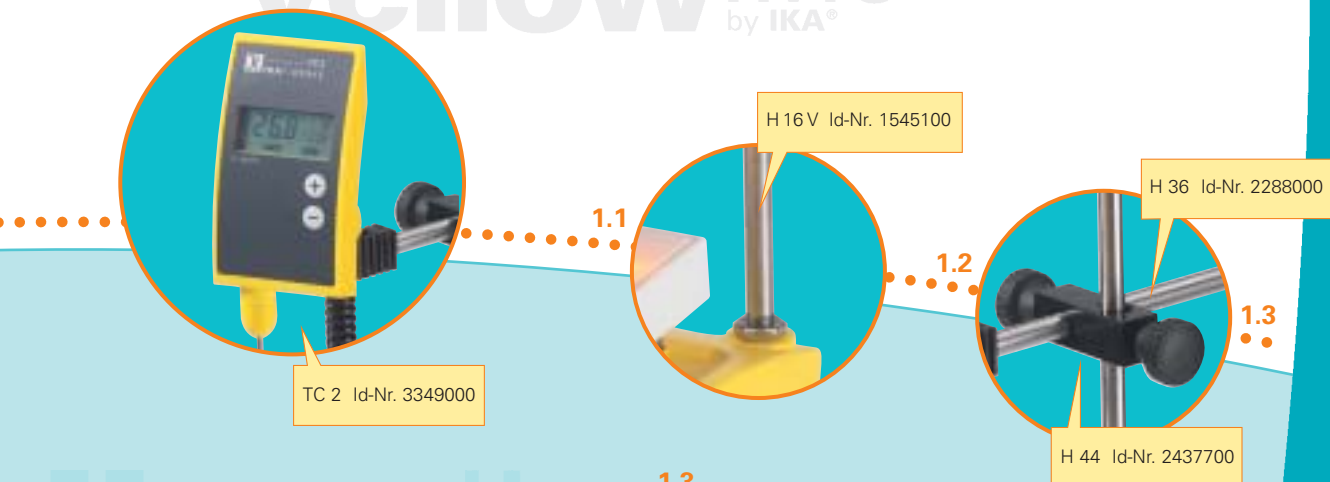
Support rod made of stainless steel for secure clamping of the temperature controller TC 2 to the MSC basic C.

Diameter:	10 mm
Length :	450 mm

1.2

Holding rod H 36

The holding rod is used to support the temperature controller TC 2 to the boss head clamp H 44 and the support rod H 16 V .



1.3

Boss head clamp H 44

The boss head clamp H 44 is used to fasten the holding rod H 36 to the support rod H 16 V.

MST basic and MST basic C

Magnetic stirrers with heating

- ☒ With adjustable safety temperature circuit
- ☒ With a new, extremely powerful magnetic inductive stirring drive
- ☒ With new hot-plate technology for equal heat distribution and fast heat-up cycles

Speed range:	15 to 1.250 rpm
Heat output:	600 W
Temperature range:	RT - 310 °C ± 20 K
Max. power consumption:	630 WS
separate adjustable safety temperature circuit:	50 - 350 °C ± 20 K
Heating plate diameter:	135 mm
Control accuracy of medium during operation with temperature controller TC 1:	± 1 K
Temperature controller connection:	DIN 12878
Dimensions (W x D x H):	160 x 280 x 85 mm
Weight:	3,2 kg
Protection class acc. to DIN EN 60529:	IP 43

The MST is available in two versions:

MST basic incl. protection cover H 88

with a stainless steel plated heating plate surface, which is very fast in comparison to standard Silumin heating plates.

Id-Nr. 2987000

MST basic C incl. protection cover H 88

with a chemical resistant white coated heating plate surface.

Id-Nr. 2989900

Protection cover H 88 Id-Nr. 3379500



MST basic Package

Id-Nr. 9008000

MST basic C Package

Id-Nr. 9008100

* Package including: MST basic or MST basic C and accessories 1.1 to 1.4

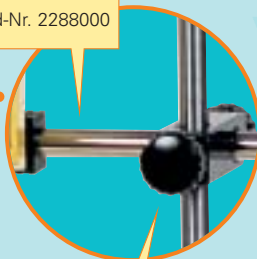




1.1 TC 1 Id-Nr. 3199900

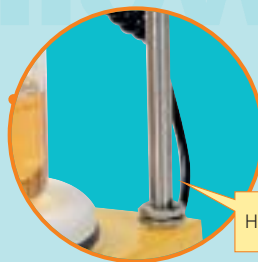
1.3

H 36 Id-Nr. 2288000



1.2

H 44 Id-Nr. 2437700



H 16V Id-Nr. 1545100

1.4

Accessories:

1.1

Temperature controller TC 1

Electronic temperature controller with Fuzzy Logic control and RESET function. For magnetic stirrers and heating plates according to DIN 12878.

- Digital temperature display

Measuring / control range:	-10 to +400 °C
Resolution :	0,1 K (-10 to +100 °C) 1 K (100 - 400 °C)
Measuring accuracy:	± 0,3 K
Sensor tolerance PT 1000:	DIN IEC 751 Class B
Control deviation:	± 1 K
Protection class acc. to DIN EN 60529:	IP 44

1.2

Boss head clamp H 44

The boss head clamp H 44 is used to fasten the holding rod H 36 to the support rod H 16 V.

1.3

Holding rod H 36

The holding rod is used to support the temperature controller TC 1 to the boss head clamp H 44 and the support rod H 16 V .

1.4

Support rod H 16 V

Support rod made of stainless steel for secure clamping of the temperature controller TC 1 to the MST basic.

Diameter:	10 mm
Length :	450 mm

The new IKA®- magnetic inductive drive

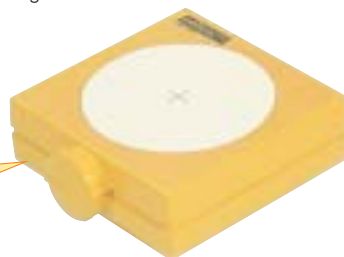
The innovative coil drive consists of 8 coils. It has high traction power and is maintenance-free. It also guarantees wear-free operation and the highest level of precision, since the drive contains no mechanically moving parts. Thanks to the new "micro-step" activation for speeds less than 150 rpm, speeds with good circularity are possible beginning at 15 rpm.



Magnetic stirrers from 0,8 - 5 l (H₂O)

MST mini

Magnetic stirrer without heating.



MST Mini Id-Nr. 3287000

Stirring quantity (H ₂ O):	800 ml
Motor rating input/output:	2 / 1 W
Infinitely variable speed:	0 - 1.500 rpm
Set-up surface:	115 x 115 mm
Max. load:	2 kg
Dimensions (W x D x H):	115 x 130 x 40 mm
Weight:	0,23 kg
Protection class acc. to DIN EN 60529:	IP 42

BIG SQUID

- ☑ With very good chemical resistance provided by glass top
- ☑ Electronically controlled motor with infinitely variable speed

Stirring quantity (H ₂ O):	1,5 l
Motor rating input / output:	2 / 1 W
Torque:	0,5 Ncm
Speed range:	0 - 1.500 rpm
Max. length of the magnetic bar:	30 x 7 mm
Set-up surface:	160 mm
Max. load:	5 kg
Dimensions (W x D x H):	180 x 180 x 48 mm
Weight:	1 kg
Protection class acc. to DIN EN 60529:	IP 54



BIG SQUID Id-Nr. 3286000

MSH basic

Magnetic stirrer with stainless steel heating plate. by IKA®

Stirring quantity (H ₂ O):	5 l
Temperature range:	RT - 350 °C
Speed range:	0 - 2.000 rpm
Heat output:	400 W
Dimensions (W x D x H):	160 x 210 x 105 mm
Weight:	2,3 kg
Protection class acc. to DIN EN 60529:	IP 21

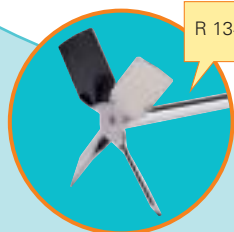


MSH basic Id-Nr. 3131200

Overhead stirring drive OST basic

- ☒ **For use up to the
"medium viscosity" range**
- ☒ **With constant torque through
micro-processor-driven control**
- ☒ **Push-through agitator shafts,
drive protected against overload**

Stirring quantity (H ₂ O):	20 l
Speed range:	50 - 2.000 rpm
Viscosity range:	up to 10.000 mPas
Motor rating input / output:	75 / 55 W
Output at stirring shaft:	53 W
Maximum torque at chuck:	30 Ncm
Chuck range:	0,5 - 10 mm
Hollow shaft, inner diameter:	11 mm
Dimensions (W x D x H):	80 x 190 x 175 mm
Weight:	2,8 kg
Protection class acc. to DIN EN 60529:	IP 42



R 1342 Id-Nr. 0741000

Propeller stirrer R 1342

Matches lab stirrer-mixer OST basic.

Material stainless steel:	1.4571
Diameter of stirrer:	50 mm
Stirrer length:	350 mm
Diameter of shaft:	8 mm



R 182 Id-Nr. 2657700

Kreuzmuffe R 182

Matches plate stand R 1826.

Clamping range of column:	6 - 16 mm
Clamping range of boom:	6 - 16 mm



OST basic Id-Nr. 3145000

Package* Id-Nr. 9006300
* OST basic, R 1826,
R 182, R 1342

R 1826 Id-Nr. 3160100

Plate stand R 1826

Stable, slip-free plate stand.
(including PUR cover).

Diameter of column:	16 mm
Height:	800 mm

Overhead stirring drive

OST 20 basic / OST 20 digital

- ☒ **Sturdy, slim stirrer**
- ☒ **Up to 20 l (H₂O) with constant power drive**
- ☒ **Two speed ranges for universal use from 60 - 2.000 rpm**
- ☒ **Push-through agitator shafts**
- ☒ **OST 20 digital with digital display**

Stirring quantity (H ₂ O):	20 l
Speed range I (50 Hz):	60 - 500 rpm
Speed range II (50 Hz):	240 - 2.000 rpm
Viscosity range:	10.000 mPas
Motor rating input / output:	70 / 35 W
Output at stirring shaft:	26 W
Permissible ON-time:	100 %
Maximum torque at chuck:	150 Ncm (100 rpm)
Chuck range:	0,5 - 10 mm
Hollow shaft, inner diameter:	10,5 mm
Diameter of extension arm:	13 mm
Dimensions (W x D x H):	88 x 212 x 294 mm
Weight:	3 kg
Protection class acc. to DIN EN 60529:	IP 20



R 1342 Id-Nr. 0741000

Propeller stirrer R 1342

Matches OST 20 basic / digital.
For description, see page 7.



R 182 Id-Nr. 2657700

Kreuzmuffe R 182

For description, see page 7.



OST 20 basic Id-Nr. 3292000
(without digital display)

OST 20 digital Id-Nr. 3293000

Package* Id-Nr. 9008800
* OST 20 digital,
R 1826, R 182, R 1342

Package* Id-Nr. 9008700
* OST 20 basic,
R 1826, R 182, R 1342

R 1826 Id-Nr. 3160100

Plate stand R 1826

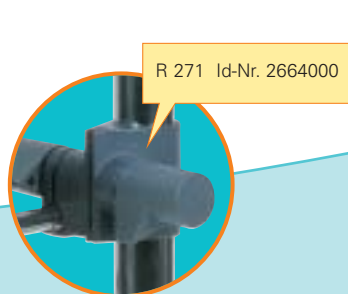
For description, see page 7.

Overhead stirring drive

OST 20 hightorque

- ☒ **Suitable for small quantities of highly viscous media**
- ☒ **Due to the high torque the stirrer has to be fixed to a stand with 34 mm diameter (e.g. R 2723)**

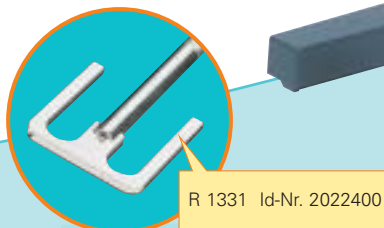
Stirring quantity (H ₂ O):	20 l
Speed range (50 Hz):	16 - 135 rpm
Viscosity range:	100.000 mPas
Motor rating input / output:	70 / 35 W
Output at stirring shaft:	26 W
Permissible ON-time:	100 %
Maximum torque at chuck:	370 Ncm (100 rpm) 600 Ncm (60 rpm)
Speed display:	digital
Chuck range:	0,5 - 10 mm
Hollow shaft:	not push-through
Diameter of extension arm:	16 mm
Dimensions (W x D x H):	88 x 212 x 383 mm
Weight:	4,2 kg
Protection class acc. to DIN EN 60529:	IP 20



Boss head clamp R 271

Matches telescopic stand R 2723.

Clamping range stand:	34 mm
Clamping range extension arm:	16 mm



Anchor stirrer R 1331

Matches OST 20 hightorque.

Material stainless steel:	1.4571
Diameter of stirrer:	90 mm
Shaft length:	350 mm
Diameter of shaft:	8 mm



Telescopic stand R 2723

For heavy instruments and attachments.

Diameter of support rod:	34 mm
Height:	620 - 1.010 mm
Stroke:	390 mm

Dispersing device

DI 25 basic

- ☒ **High performance dispersion device
for use in numerous applications**

Speed range:	8.000 - 24.000 rpm
Motor rating input / output:	600 / 350 W
Speed adjustment:	infinitely variable
Speed stability:	1%
Speed display:	scale / analog
Dimensions (W x D x H):	70 x 66 x 221 mm
Weight:	1,6 kg
Protection class acc. to DIN EN 60529:	IP 20

S 25 N-18G Id-Nr. 0593400

Dispersing tool S 25 N-18G

Tool made of stainless steel 1.4571 with PTFE-bearing.

- Suitable for solvents and abrasive substances
- Dispersion tool can be sterilized using all methods

Diameter of stator:	18 mm
Working range:	10 - 1.000 ml
Temperature range:	up to 180 °C

Package* Id-Nr. 9006400

*DI 25 basic, R 1826,
R 182, S 25 N - 18G

Drive DI 25 basic
Id-Nr. 3130000

R 182 Id-Nr. 2657700

Boss head clamp R 182

Matches plate stand R 1826.

Clamping range of column: 6 - 16 mm

Clamping range of boom: 6 - 16 mm

Dispersing device

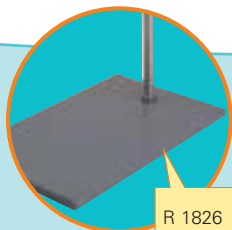
DI 18 basic

- ☒ **An affordable low cost high value unit for simple mixing tasks**
- ☒ **The wide speed range makes it possible to work at high circumferential speed**
- ☒ **Accepts plug-in dispersing tools**

Speed range:	6.000 - 24.000 rpm
Motor rating input / output:	300 / 160 W
Speed adjustment:	infinitely variable
Speed display:	scale / analog
Dimensions (W x D x H):	78 x 78 x 220 mm
Weight:	1,2 kg
Protection class acc. to DIN EN 60529:	IP 20



Drive DI 18 basic
Id-Nr. L005118



R 1826 Id-Nr. 3160100

Package* Id-Nr. 9007900
*DI 18 basic, R 1826,
R 182, S 18 N-10G



S 18 N-10G Id-Nr. L004639

Plate stand R 1826

Stable, slip-free plate stand.

Diameter of column:	16 mm
Height:	800 mm

Dispersing tool S 18 N-10G

Tool made of stainless steel 1.4571 with PTFE bearing.

- Suitable for solvents and aggressive substances
- Dispersion tool can be sterilized using all methods

Diameter of stator:	10 mm
Working range:	1 - 100 ml
Temperature range:	up to 180 °C

Orbital shaker

OS 5 basic

yellowline
by IKA®

- ☒ Quiet operation, wear-free
- ☒ Electrical adjustment of speed
- ☒ Adjustable timer from 5 - 50 min or continuous operation
- ☒ LED display for speed and time setting
- ☒ AS 130.1 universal attachment allows to use almost all shapes and sizes of vessels
- ☒ With constant torque through micro-processor-driven control
- ☒ Drive protected against overload
- ☒ Eigensicher durch ständige Überwachung aller elektr. Bauteile



OS 5 basic Id-Nr. 3180100

Shaking motion:	orbital
Shaking orbit:	Ø 4 mm
Permissible shaking weight (with attachment):	2 kg
Motor rating input:	45 W
Permissible ON-time:	100 %
Speed range infinitely adjustable:	80 - 800 rpm
Speed display:	LED line
Time switch clock:	5 - 50 min
Dimensions without attachment (W x D x H):	270 x 316 x 98 mm
Weight:	7,7 kg
Protection class acc. to DIN EN 60529:	IP 21

Package* Id-Nr. 9007300
* OS 5 basic, AS 130.1

yellowline
by IKA®

Orbital shaker

OS 5 control

Details as per OS 5 basic plus the following:

- ☒ **Digital display for speed and time**
- ☒ **An RS 232 interface makes it possible to control and document all functions with a PC**
- ☒ **Adjustable timer up to max. 9 hrs 59 min or continuous operation**



yellowline
by IKA®



AS 130.1 Id-Nr. 8017300

Universal attachment AS 130.1

Can be adjusted to fit all types of vessels with 3 universal, infinitely adjustable clamping rolls.

Dimensions (W x D x H):	325 x 234 x 88 mm
Holding surface:	220 x 220 mm
Weight:	0,85 kg



OS 5 control
Id-Nr. 3180200

Package* Id-Nr. 9007400

* OS 5 control, AS 130.1

yellowline
by IKA®

Orbital shaker OS 10 basic

Reciprocating shaker RS 10 basic

- ☒ **Compact, flat laboratory shakers**
- ☒ **Electronical adjustment of speeds**
- ☒ **Adjustable timer from 5 - 50 min or continuous operation**
- ☒ **LED display for speed and time setting**
- ☒ **AS 260.1 universal attachment (accessory) allows to use almost all shapes and sizes of vessels**
- ☒ **With constant torque, protected against overload and intrinsically safe operation, like OS 5 basic**

OS 10 basic + AS 260.1

Id-Nr. 9007500

RS 10 basic + AS 260.1

Id-Nr. 9007700



OS 10 basic Id-Nr. 3180300
RS 10 basic Id-Nr. 3180700

Shaking motion:	orbital (OS), reciprocating (RS)
Shaking movment:	10 mm (OS), 20 mm (RS)
Perm. shaking weight (with attachment):	7,5 kg
Motor rating input:	45 W
Permissible ON-time:	100 %
Speed range infinitely adjustable:	20 - 500 rpm (OS), 20 - 300 rpm (RS)
Speed display:	LED line
Timer:	5 - 50 min
Dimensions (W x D x H):	360 x 420 x 98 mm
Weight:	8,1 kg
Protection class acc. to DIN EN 60529:	IP 21



AS 260.1 Id-Nr. 8017400

Orbital shaker OS 10 control

Reciprocating shaker RS 10 control

Details as per OS 10 basic / RS 10 basic, but with these additional features:

- ☒ **Digital display for speed and time**
- ☒ **An RS 232 interface makes it possible to control and document all functions with a PC**
- ☒ **Adjustable timer up to max. 9 hrs 59 min or continuous operation**
- ☒ **Adjustable speed range**
10 - 500 min⁻¹ (OS)
10 - 300 min⁻¹ (RS)



OS 10 control Id-Nr. 3180400
RS 10 control Id-Nr. 3180800

Universal attachment AS 260.1

Can be adjusted to fit all types of vessels with 4 universal, infinitely adjustable clamping rolls.

Dimensions (W x D x H):	425 x 335 x 135 mm
Holding surface:	320 x 320 mm
Weight:	1,6 kg

OS 10 control + AS 260.1

Id-Nr. 9007600

RS 10 control + AS 260.1

Id-Nr. 9007800

Orbital shaker

OS 2 basic

- ☒ **Cost effective orbital shaker that includes universal attachment, 2 clamping rolls and 4 fastening screws**
- ☒ **Very stable and sturdy housing**
- ☒ **With constant torque through micro-processor-driven control**
- ☒ **Wide adjustable speed range**
- ☒ **Drive protected against overload**
- ☒ **Intrinsically safe by permanent supervision of all electric components**
- ☒ **Incl. protection cover**

OS 2 basic Id-Nr. 3295000
(incl. attachment)



Shaking motion:	orbital
Shaking orbit:	Ø 4 mm
Shaking weight:	2 kg
Motor rating input:	45 W
Permissible ON-time:	100 %
Speed range:	0 - 1.100 rpm
Speed display:	scale
Dimensions (W x D x H):	415 x 383 x 153 mm
Weight:	11,6 kg
Protection class acc. to DIN EN 60529:	IP 21

Analytical grinder

A 10

- ☒ **With a built-in cooling chamber**
- ☒ **Suitable for low-loss dry grinding of soft, hard and brittle substances**
- ☒ **Removable, easy-to-clean, high-grade steel chamber**
- ☒ **3 interchangeable cutters available**
- ☒ **Electronic overload protection**

Maximum task granularity:	6 - 7 mm
Nominal speed:	20.000 rpm
Effective vol. of grinding chamber:	50 ml
Duty cycle ON/OFF:	5 min / 10 min
Dimensions (W x D x H):	120 x 105 x 225 mm
Weight:	2,2 kg
Protection class acc. to DIN EN 60529:	IP 21

A 10 Id-Nr. 3250000
(incl. A 14 and A 18)



A 17 Id-Nr. 1462700



Star-shaped cutter A 17

Suitable to grind fibrous substances such as paper and dried vegetation, soil samples, frozen meat and plastic granulates with low volume weight.

A 15 Id-Nr. 1059100



Hard metal cutter A 15

Made of tungsten carbide for hard materials suitable for Mohs hardness up to 9.

A 18 Id-Nr. 2318200



Grinding chamber reduction A 18

For pulverizing only very small test samples (incl. in the A 10 supply schedule).

A 14 Id-Nr. 1059300



Stainless steel cutter A 14

For pulverizing most brittle materials, suitable for Mohs hardness up to 5. (incl. in the A 10 supply schedule)

Bath vessels

EH 4.1, EH 4.2 and EH 4.3

yellowline
by IKA®

- ☒ Suitable for the immersion thermostat ET basic
- ☒ Constructed of Polycarbonate

Bath vessels:	EH 4.3	EH 4.2	EH 4.1
Material:	Polycarbonate		
Filling quantity without vessels:	max. 18 l	max. 11 l	max. 5 l
Outer dimensions (W x D x H):	350 x 473 x 168 mm	350 x 313 x 168 mm	132 x 280 x 160 mm
Inner dimensions (W x D x H):	302 x 455 x 150 mm	302 x 295 x 150 mm	120 x 262 x 150 mm



EH 4.3 Id-Nr. 3335200

EH 4.2 Id-Nr. 3335100

EH 4.1 Id-Nr. 3335000

Package* Id-Nr. 9009200
* ET basic, EH 4.3

Package* Id-Nr. 9009100
* ET basic, EH 4.2

Package* Id-Nr. 9009000
* ET basic, EH 4.1

Immersion Thermostat

ET basic

- ☒ For temperature control up to 100 °C, in all open water baths
- ☒ Short heating cycles
- ☒ High pump capacity
- ☒ Universal mounting
- ☒ Safe operation and maintenance free
- ☒ Analog temperature setting
- ☒ Adjustable safety circuit

Working temperature:	25 - 100 °C
Temperature constancy DIN 12876:	± 0,12 K
Heat output:	1.500 W
Bath volume max.:	18 l
Pump pressure max. (0 liters discharge flow):	0,08 bar
Pump pressure max. (0 bar back pressure):	5 l/min
Immersion depth:	160 mm
Voltage:	230/115 V
Frequency:	50/60 Hz
Dimensions (W x D x H):	105 x 139 x 319 mm
Weight:	2,3 kg
Protection class acc. to DIN EN 60529:	IP 31



ET basic Id-Nr. 3163000

Test tube shaker

TTS 2

- ☒ **Universal shaker for test tubes and small vessels**
- ☒ **Continuous operation or automatic mode of operation by pressure on the top attachment**
- ☒ **A large selection of attachments allows for an extensive range of applications**

Shaking motion:	orbital
Shaking orbit:	Ø 4,5 mm
Perm. agitation weight (with attachment):	0,5 kg
Motor rating input/output:	30 / 23 W
Permissible ON-time:	100 %
Speed range (infinitely adjustable):	0 - 2.500 rpm
Speed display:	scale / analog
Dimensions (W x D x H):	115 x 225 x 60 mm
Weight:	3,5 kg
Protection class acc. to DIN EN 60529:	IP 21



MS 1.34 Id-Nr. L001830

Test tube insert MS 1.34

No pre-drilled holes. Any number of holes may be drilled.



MS 1.33 Id-Nr. L001860

Test tube insert MS 1.33

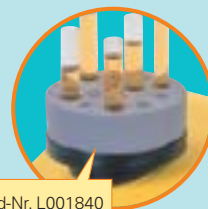
4 holes, Ø 15 mm



MS 1.32 Id-Nr. L001850

Test tube insert MS 1.32

6 holes, Ø 10 mm



MS 1.31 Id-Nr. L001840

Test tube insert MS 1.31

14 holes, Ø 8 mm

IKA®-WERKE GMBH & CO.KG

Janke & Kunkel-Straße 10, D-79219 Staufen

Tel. +49 7633 831-0, Fax +49 7633 831-98

e-mail: sales@ika.de, www.ika.net

www.yellowline.info